

# THANK YOU SPONSORS!



## Overall Event Sponsors



## Sessions Sponsors



## Career Fair & Gift Sponsors



## Meal Sponsors



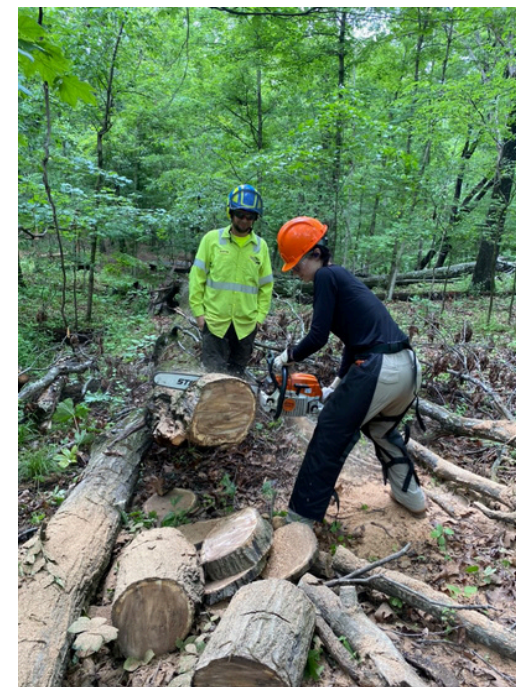
## Companies Attending the Career Fair Round Table Event IAA (Municipal Focus)



# SIU FORESTRY FIELD DAYS SCHEDULE OF EVENTS

May 11<sup>th</sup> – 12<sup>th</sup>, 2026

Touch of Nature Environmental Center:  
Freeberg Hall/ Burke Lounge



# MAY 11TH, 2026

**8am – 9am: Breakfast & Introductions (8:40am)**

**9am – 10:45am: Chainsaw Safety & Operation Training**

**Instructor:** Jhonny Favier

**10:45am – 11:15am: 6-Step Felling Plan**

**Instructor:** Sam Soltwisch

**11:15am – 12pm: PHC Safety and Application Training**

**Instructors:** Jacob Kulp & a SavaTree representative

**12pm-1pm: Lunch & Introductions**

**1pm – 3:30pm: Felling & PHC Demonstration**

**Instructors:** Charles Shontz & Sam Soltwisch (Felling), Jacob Kulp & a SavaTree representative (PHC)

**3:30pm – 4:15pm: Hands on Chainsaw Maintenance & Sharpening**

**Instructors:** Charles Shontz, Andrew Guettler, Jhonny Favier & Other Trainers

**4:15 pm – 4:45 pm: Overview of Day Group Trainings and Handouts**

**Instructors:** Group Trainers, Roger Smith & Andrew Ranney



# MAY 12TH, 2026

**7am – 8am: Breakfast, Introductions, Group Photo**

**8am – 12:30pm: Group Trainings**

**\*Groups rotate stations every 1.5 hours.**

**Chainsaw Safety & Operation**

- Charles Shontz
- Sam Soltwisch
- Macy Drew
- Kyle Carevic
- Thomas Beshoar
- Mark Noark
- Tom Day

**PHC Applications & Air Spade Demo**

- Jacob Kulp
- Daniel Miraval
- Charlie Eure

**Tree Climbing Techniques**

- Beau Nagen, Phil Reth, Lisa Mende, Patrick Kelsch, Chris Roberts, Leanna Strecker

**12:30 - 1:30: Lunch**

**1:30pm – 3:30pm: Career Fair**

**3:30pm-4:15pm: Event Conclusion**

- Quiz, Recommendation/Review Form & Concluding Statements from staff, instructors and students.
- Also will announce the Featured Forestry Students.

**End with the RAFFLE!**