

Sudden Oak Death by Lindsay Darling

In the spring and summer of 2019 the pathogen that causes sudden oak death (SOD) (*Phytophthora ramorum*) was detected in nursery stock in Indiana and Illinois. Rhododendrons that were being sold at Walmart, HyVee, and Rural King stores in several counties were infected by the disease. The plants in both states came from the same source, and shipping records show that the plants have been shipped to 18 states in total. The infected plants that were detected at retailers have been quarantined, but it is likely that additional infected plants have been sold and are in the landscape. If *P. ramorum* spreads to oaks it will be devastating for natural areas and for urban trees alike. Oaks are the most abundant tree genus in many of the forests in Illinois, and are particularly important for wildlife. As this introduction may not be contained, and future introductions of the disease through nursery stock are likely to occur (Cave et al. 2008), it is imperative that arborists and the broader public are able to identify the disease so it can be detected, contained and reported. This article will outline what *P. ramorum* is, its history, how it is transmitted, and how it can be recognized and stopped.

Even the name “*Phytophthora*” is ominous. It means plant destroyer in Greek. It’s a type of water mold (oomycete), which have characteristics of fungi (it spreads through hyphae and creates spores), plants (the cell walls are made of cellulose), and animals (it has flagella that allow it to swim through water). There are many species of *Phytophthora*, including *P. infestans* which caused the potato blight that led to the Great Irish Famine, and *P. sojae*, which is an extremely destructive disease in soybeans. *P. ramorum* can disperse through soil, wood, or water. Spores form on infected leaves and can be dispersed by rain or wind. Flagella allow *Phytophthora* species to swim through water in wet conditions (Grünwald et al. 2012), giving it a

farther range of transmission than many other plant diseases

P. ramorum was first described in Germany and the Netherlands in the late 1990s, where it was observed as a blight of rhododendron and viburnum (Werres et al. 2001). Sudden oak death was detected in the central coast of California around the same time, but it wasn’t until 2000 when researchers isolated the pathogen and discovered that it was the same disease that had infected the ornamental plants in Europe (Davidson et al. 2003).

P. ramorum is challenging to contain because can infect plants across a large taxonomic range, including rhododendrons, pieris, azaleas, periwinkle, and lilac (Cave et al. 2008). With most of these plants the disease affects the leaves or twigs, causing browning, twig canker, and dieback. In ornamental species it is commonly known as ramorum blight, and it is rarely fatal. However, as the pathogen can travel through both soil and water, spread into the broader environment and to native species is a concern.



Figure 1: Ramorum blight on viburnum (above) and pieris (page 4). Image credit: Janna Beckerman, Purdue University.

Table of Contents	
Sudden Oak Death	1
President's Message	3
Illinois Tree Climbing Championship	5
Calendar of Events	8
Drug Free Workplace - Is it possible?	9
IAA Annual Conference & Trade Show Program	11
TREE Fund Awards	18
The Most Important Aspect of Hiring	22
2020 IAA Day of Service Application	26



Don't forget
to sign-up for
the upcoming
IAA Annual
Conference &
Trade Show

IAA Board of Directors

President

Steve Lane
Graf Tree Care
1485 Louis Bork Dr. #113
Batavia, IL 60510
Phone: 630-762-2400
Fax: 630-578-1304
steve@graftree.com

President Elect

Jake Miesbauer
The Morton Arboretum
4100 Rt. 53
Lisle, IL 60532
Phone: 630-719-2413
jmiesbauer@mortonarb.org

Vice President

Beau Nagen
Cantigny
1S151 Winfield Rd
Wheaton, IL 60189
Phone: 708-715-7934
beau.nagan@gmail.com

Past President

Eduardo Medina
Davey Tree Experts
2537 West Jarvis
Chicago, IL 60645
Phone: 773-791-4466
Fax: 773-481-8039
hombredelarbol@hotmail.com

Executive Director

April Toney
Illinois Arborist Association
PO Box 860
Antioch IL, 60002
Phone: 877-617-8887
Fax: 262-857-6677
april@illinoisarborist.org

ISA CoR Representative 2019

Steve Ludwig
Village of Algonquin
110 Meyer Drive
Algonquin, IL 60102
Phone: 847-658-1277
stevludwig@algonquin.org

Director Municipal 2020

Tony Dati
Village of Niles
6849 Touhy Ave.
Niles, IL 60714
Phone: 847-588-7900
aas@vniles.com

Director Commercial 2020

Daniel Miraval
Green Extraction Technologies
26W515 St. Charles Road
Carol Stream, IL 60188
Phone: 540-840-6014
dmiraval@greenextractiontechnologiesllc.com

Director Utility 2019

Sara Dreiser
Davey Resource Group
910 Riverside Drive
Elmhurst, IL 60126
Phone: 630-291-4530
sara.dreiser@davey.com

Director Municipal 2019

Eric Hendrickson
Village of Lombard
255 East Wilson Ave
Lombard, IL 60148
Phone: 630-620-5740
hendricksone@villageoflombard.org

Director Commercial 2019

Aaron Schulz
King Tree Specialists, Inc.
17220 Springfield Road
Groveland, IL 61535
Phone: 309-620-1358
aaron@kingtreespecialists.com

Director Industrial 2019

Bill Black
Winkler's Tree Service
100 Manheim Road
Hillside Rd, IL 60162
Phone: 815-276-5054
wmjblack@comcast.net

Director of Programs 2021

Chris Evans
University of Illinois Extension Center
354 State Highway 145N
Simpson, IL 62985
Phone: 618-364-7261
cwevans@illinois.edu

Director Research 2019

Lindsay Darling
Research Director
GIS Analyst
Chicago Region Trees Initiative
ledarling@gmail.com

Director Finance 2019

Ron Gatewood
Meurer Brothers
5031 Frank Scott Pkwy West
Belleville, IL 62223

Illinois Arborist Association

Mission Statement

"Foster interest, establish standards, exchange professional ideas and pursue scientific research in Arboriculture"

President's Message

Steve Lane

Dear Illinois Arborist Association Members,

Well, for another year, we had a never-ending winter, with extended cold and wet conditions. And then when June was done dumping rain and thunderstorms on us; SURPRISE! Now we're in a drought. Whether you had to run storm cleanup after that nasty round of June weather, or had your PHC season delayed by the extended cool and wet period, or are now diagnosing heat and water related stresses, it's been a rough year so far to say the least, and we're only just past the halfway point. Chances are things aren't going to get any easier. If the past is a predictor of the future, we'll likely see continued drought, followed by late warm periods, more bad storms this autumn, and who even knows about winter?!?!

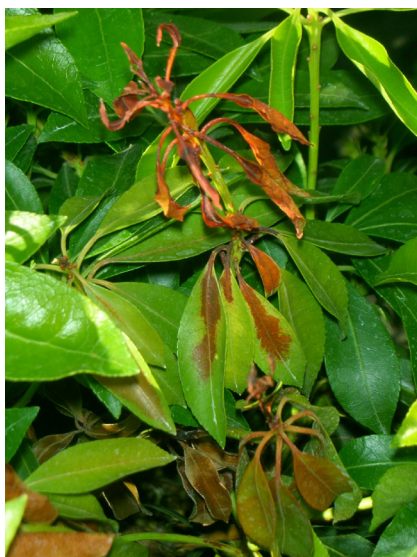
While all of this is great job security for those of us who make a living caring for trees, it certainly doesn't help us try and plan and schedule for those things in life that mean something more to us, like family and trying to get away to enjoy the warm weather while it lasts. And I suppose that's my message for this time of year; get out and try to enjoy yourself a little bit! Life is too short to constantly be worried about the next big storm, or when your deadlines are due. Read a book, get away for the weekend, have a cold beverage next to the pool, and try to unwind a little bit. Stress is one of the leading cause of accidents in not only our industry, but in many industries. Job site fatigue leads to poor decisions, and poor decisions lead to incidents.

When you take some time for you and your family, you get a chance to decompress, get away from the grind a little bit, and really focus on what's important. Coming back to work with a clear frame of mind is worth its weight in gold in terms of safety, and that's something that can't be overstated. While you're at it, try to take advantage of some of the fun things we have planned for IAA this year: The climbing competition is a great event for family, and we will be having our Kids Climb event again this year for the budding arborist in your group! We also have our annual golf outing coming up, which is a great way to network with your peers and enjoy a much-needed day off while still doing some "industry stuff". So, remember to take some time this summer to take care of yourself and your family, and try to make it to some of these great events that support the IAA, the arboricultural community, and your own goals of a little rest & relaxation. Cheers!

Sincerely,
Steve Lane
IAA President

Sudden Oak Death (cont)

(continued from page 1)



As the name “sudden oak death” suggests, *P. ramorum* affects oaks quite differently than the other carrier species. *P. ramorum* infects the phloem in oaks, causing bleeding cankers. It can kill an individual in just a few

seasons after infection (Grünwald et al. 2012). Many oaks do not show infection in their leaves; the red drops that weep from the cankers are the most clear way to diagnose SOD. When the bark is removed on an infected individual, dark lines and spots are evident in the affected area. Sudden oak death is incurable, at this point, once detected. Not all oaks are susceptible; only oaks in the red oak group. In Illinois, known hosts include, red, black, Northern pin, pin, scarlet, Shumard, and cherry bark oaks.



Figure 2: Symptoms of SOD. Characteristic red oozing from cankers (left). When the bark is removed dark splotches are revealed (right). Note that the wood in this oak species is red, and that color is not indicative of SOD.

It would be nearly impossible to contain SOD if it were released into natural areas. Instead, prevention is the best way to protect oaks. This is especially important at the urban/natural

boundaries, as SOD is most likely to be introduced by ornamental species (Cave et al. 2008). Arborists should learn the host plants and how to identify the symptoms of ramorum blight in ornamentals.

Contact the Illinois Department of Agriculture if they believe that they have detected it. For more resources on identifying ramorum blight and SOD, see <http://www.suddenoakdeath.org/diagnosis-and-management/hosts-and-symptoms/>.

For more information please contact:

Scott Schirmer, Nursery & Northern Field Office Section Manager, SPRO Illinois Department of Agriculture (815) 787-5476, scott.schirmer@illinois.gov

Tricia Bethke, Illinois Forest Pest Outreach Coordinator, The Morton Arboretum (630) 719-7953, tbethke@mortonarb.org

Cave, G. L., B. Randall-Schadel, and S. Redlin. 2008. Risk Analysis for *Phytophthora ramorum* Werres, de Cock & Man in't Veld, Causal Agent of Sudden Oak Death, Ramorum Leaf Blight and Ramorum Dieback. USDA APHIS.

Davidson, J. M., S. Werres, M. Garbelotto, E. M. Hansen, and D. M. Rizzo. 2003. Sudden oak death and associated diseases caused by *Phytophthora ramorum*. *Plant Health Progress* 4:12.

Grünwald, N. J., M. Garbelotto, E. M. Goss, K. Heungens, and S. Prospero. 2012. Emergence of the sudden oak death pathogen *Phytophthora ramorum*. *Trends in Microbiology* 20:131–138.

Werres, S., R. Marwitz, W. A. M. In't Veld, A. W. A. M. De Cock, P. J. M. Bonants, M. De Weerd, K. Themann, E. Iliava, and R. P. Baayen. 2001. *Phytophthora ramorum* sp. nov., a new pathogen on *Rhododendron* and *Viburnum*. *Mycological Research* 105:1155–1165.



Illinois Tree Climbing Championship



Join us for this year's Tree Climbing Championship and Arbor Fair being held on September 28th at Shiloh Park in Zion, IL. The winners of this year's competition will represent the Illinois Chapter at the International Tree Climbing Championship being held in Albuquerque, NM in August 2020.

Come see the best in Illinois climb, watch as Ken Clark creates one of his Chainsaw Carvings, bring the kids along because North Branch will provide kids a safe and fun climbing experience, visit with your peers, enjoy meeting with equipment vendors, enjoy good food. Admission for spectators is free. Bring a lawn chair!

Location: Shiloh Park
1619 27th Street
Zion, IL

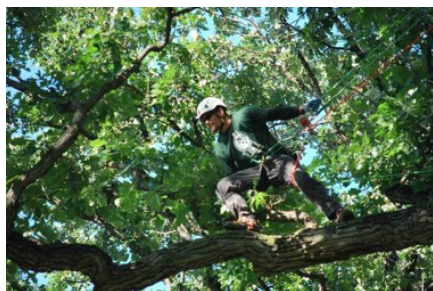
8:00am – 5:00pm

Some of you might wonder – what does a climbing competition entail?

This event showcases the skills of up to 30 competitors as they maneuver the trees performing five different preliminary events. Each event tests a competitor's ability to quickly, professionally, and safely maneuver in a tree while performing work-related tree-care tasks.

(continued on page 6)

Illinois Tree Climbing Championship (cont.)



Aerial Rescue: A timed event that tests the climber's ability to climb and safely lower an injured climber who is unable to descend without assistance. This event simulates a job-site emergency.

Work Climb: tests the competitor's ability to move about



a tree using a tree-climbing rope and harness. Competitors start in the tree and are required to visit five workstations throughout the tree to perform a specified task after which they must ring a bell. The stations include handsaw, limb toss, pole pruning, limb walk, and landing. Each of these stations simulate tasks that are performed by tree workers when working aloft.

Ascent Event: tests the competitor's ability to efficiently and safely use their selected and approved ascent system. The event assesses the competitor's efficiency in attaching the ascent system to the ascent line(s), ascending to the bell, and transferring into a descent system. The actual decent is not part of the event. Points are earned for speed as well as for meeting predetermined safety objectives.

Belayed Speed Climb: tests the climber's ability to climb a predetermined route from the ground to about 60 feet up a tree using a belayed climbing system for safety. This event is timed, and the competitor who reaches and rings the final bell in the shortest time is the winner. This event demonstrates that tree workers must determine the best and most efficient route to take to reach the top of the tree to avoid getting the rope snagged on the branches causing them to break limbs or damage the tree.

Throwline: is a timed event that tests the competitor's ability to accurately place a climbing line in a tree at heights of up to 60 feet. The competitor attempts to toss a line through two of eight targets. Each target is worth a different amount of points depending on difficulty. A throwline is used for climbers to set their climbing line into a tree. A rope must be set and a climbing line installed in order for a tree worker to ascend a tree to perform tree work. Throwlines must be installed at a point that will be sturdy and secure to accommodate the climber's weight with gear while working in the tree.

The three climbers who score the highest during the preliminary competition will compete in the Masters' Challenge.

Masters' Challenge: The Masters' Challenge event is the championship round of the competition. The top men and top women finishers from the preliminary round advance to the Masters' Challenge to compete for the title of ITCC World Champion. The Masters' Challenge is designed to judge the contestant's overall productivity and skill with a rope and saddle in the tree. The stations are similar to the Work Climb Event stations.

(continued on page 7)

Illinois Tree Climbing Championship (cont.)



Arborwear for providing awesome shirts at a large discount.

Kramer Tree Specialists for providing lunch for all the contestants and judges.

The Mulch Center and Petzl for an all event sponsor.

Green Extraction Technologies for sponsoring the Ascent Event.

North Branch for providing the kids climb.

All Gear, At Height, WesSpur, and Yale Cordage for donating prizes.

The *Illinois Arborist Association* is pleased to announce the 2019 ArborMaster Climbing Kit Prize Package for the Tree Climbing Champions (TCC), held in conjunction with the chapter's 2019 Tree Climbing Championship (TCC) event. This climbing kit is being offered to each chapter champion (both man and woman, if applicable)! This package is intended to help equip the chapter representative(s) for the International Tree Climbing Championship (ITCC) Competition.

Each prize package includes:

- Buckingham Master 5.0 Arborist Tree Climbing Saddle
- Silky Zubat Arborist Professional Hand Saw with Leg Straps
- OREGON Tool Bag
- Vermeer Logo'd 52 oz Stainless Steel Oversized Mug
- 50% savings for an ArborMaster 2-Day or 3-Day Hands-On Training Module
- Samson ArborMaster 150' Hawkeye Climbing Line with eye splice

Back by popular demand – The Kids Climb hosted by **North Branch**. Bring the kids out to try climbing a tree like the pro's do!



Calendar of Events

August 23rd

IAA Golf Outing
St. Andrews Country Club

Location: West Chicago

September 4th - November 6th

IAA Arborist Certification Classes - Weds.
Homewood Public Works

Location: Homewood

September 9th

Certification Exam
Downers Grove Public Works

Location: Downers Grove

September 9th - November 4th

IAA Arborist Certification Classes - Mons.
Lombard Public Works

Location: Lombard

September 18th - November 20th

IAA Arborist Certification Classes - Weds.
Crystal Lake Public Works

Location: Crystal Lake

September 28th

Illinois Tree Climbing Competition
Shiloh Park, Zion

Location: Zion

November 5th & 6th

IAA Annual Conference
Holiday Inn Convention Center

Location: Tinley Park, IL

November 11th

Certification Exam
Lombard Public Works

Location: Lombard

November 18th

Certification Exam
Downers Grove Public Works

Location: Downers Grove

November 20th

Certification Exam
Crystal Lake Public Works

Location: Crystal Lake

For more information on these events...

Contact the IAA office 877-617-8887

Ask for April or Monica

Or

to be added to our listserve, email april@illinoisarborist.org

Visit our website: www.illinoisarborist.org

Drug Free Workplace - Is it Possible?

by Malcolm Jeffris (ArboRisk Insurance)

One in four workplace injuries arise out of drug or alcohol abuse. Operating with a drug free workplace has become a hot topic, particularly with the legalization of recreational marijuana in eleven states across the country. No matter the stance you take on the topic, the question we all want to know the answer to is “How will this impact my business?”

Depending on your company's operations, you may be subject to different standards in regards to substance abuse. For example, if you travel across state lines, you are subject to Federal laws and regulations in which case there is a Zero Tolerance policy for drugs and alcohol. The same goes for any tree services falling under DOT regulations, as the DOT took its stance stating “Marijuana is still illegal under federal law, meaning all “safety sensitive” employees who are subject to federally-mandated drug testing are still prohibited from using the drug. This group of employees includes anyone who operates commercial vehicles, including train engineers, pilots and school bus drivers.”

When looking at the state regulations, tree care companies are in an entirely different situation. In Colorado for example, there is Amendment 64, which provides business owners with the choice to test employees and determine the consequences should those tests come back positive. Make sure to check with your state and verify its stance on the topic.

Although some states say implementing a

drug free workplace is up to the employer, here are my three reasons you should have one.

Your Safety Culture - Creating a drug-free policy at work is fairly straightforward. The easiest way to approach it is making it synonymous to your alcohol policy. Just as it seems ridiculous to think of an employee operating a 23 ton grapple truck after consuming alcohol, we don't want anyone operating while being under the influence of marijuana. In doing so, you exemplify the importance of your employees along with others who would potentially be at risk.

Insurance Availability & Discounts -

We recently attended the Ohio Tree Care Conference and had the opportunity to sit in on a presentation regarding Ohio worker's compensation. Ohio employers are eligible for up to 10% rebates on their worker's compensation costs if they implement a drug-free safety program, the same goes for employers in Washington. Here in Wisconsin, we have seen insurance companies require a drug-free workplace program from insureds in order to renew their policies. Check with your insurance carrier to learn about possible discounts from implementing a drug-free workplace policy.

Productivity - A WCF insurance company study shows employees who have substance abuse issues are twice as likely to change employers three or more times in a year. The

(continued on page 23)

2019 Illinois Tree Climbing Competition

2019 ArborMaster Climbing Kit Prize Package

The Illinois Arborist Association is pleased to announce the 2019 ArborMaster Climbing Kit Prize Package for the Tree Climbing Champions (TCC), held in conjunction with the chapter's 2019 Tree Climbing Championship (TCC) event.

This climbing kit is being offered to each chapter champion (both man and woman, if applicable)! This package is intended to help equip the chapter representative(s) for the International Tree Climbing Championship (ITCC) Competition.

Each prize package includes:

- Buckingham Master 5.0 Arborist Tree Climbing Saddle
- Silky Zubat Arborist Professional Hand Saw with Leg Straps
- OREGON Tool Bag
- Vermeer Logo'd 52 oz. Stainless Steel Oversized Mug
- 50% savings for an ArborMaster 2-Day or 3-Day Hands-On Training Module
- Samson ArborMaster 150' Hawkeye Climbing Line with eye splice

Sponsored by:



IAA Annual Conference & Trade Show

Holiday Inn Tinley Park Convention Center

November 5 & 6, 2019

REGISTRATION GUIDE



Advanced Registration MUST be postmarked by October 21 to receive the discounted rate.

Monday Sessions: (Choose one at right, add'l fee)

Full Conference

Advanced IAA Member	\$265.00
Advanced Non-Member	\$305.00
At-Door IAA Member	\$285.00
At-Door Non-Member	\$325.00

Daily (Tues. or Wed.)

Advanced IAA Member	\$195.00
Advanced Non-Member	\$215.00
At-Door IAA Member	\$205.00
At-Door Non-Member	\$225.00

Full Time Student (must show ID)

Full Conference	\$ 75.00
Daily	\$ 25.00

Membership to the Illinois Arborist Association is required for the member rates. **Annual dues for the IAA are \$45 which can be paid at the time of registration to receive the discounted rates.**

Send forms and payments to: monica@illinoisarborist.org,
april@illinoisarborist.org, Fax 262-857-6677 or mail to:
IAA, PO Box 860, Antioch, IL 60002.

Name: _____

**Multiple names can be listed with conference info & attached.*

Company: _____

Address: _____

City, State, Zip: _____

Email: _____

Phone: _____

Allergy Restriction: _____

Current Member? YES or NO

New/Renew Member Dues - Please **add \$45** to my
registration to receive the member rates. YES or NO

Please select one type of registration:

Full Conference _____ Tuesday Only _____

Wednesday Only _____ Spanish Session _____

Monday Sessions (Choose One) *Add'l fee listed on pg.2

1. EHAP _____ 2. Stop the Bleed _____

3. AT Tree Risk _____ 4. AT Community Outreach _____

Please select method of payment:

Check#: _____ **PO#:** _____ **M/C or VISA**

Credit Card #: _____

Exp. Date: _____ Security Code: _____

Name on Card: _____

IAA Annual Conference & Trade Show Monday Sessions - November 4, 2019

COST: \$125.00		Electrical Hazard Awareness (EHAP) - John Ball, South Dakota University
8:00am - 3:00pm	6 CEUs available	The Electrical Hazards Awareness Program (EHAP) from TCIA is a great way to keep your crews aware of electrical hazards and reduce injuries and losses, plus keep them trained and ready so you're prepared to qualify for storm cleanup at any moment. Electricity is a serious and widespread hazard to arborists. In fact, electricity causes about 30 percent of all fatalities in the tree care industry, making it the leading cause of worker fatalities. Since even a street lamp circuit or phone line can be energized with enough voltage to kill, almost all arborists in the field have at least some exposure to this hazard. In fact, workers don't even have to touch a wire to be electrocuted; about half of all electrocution fatalities are the result of indirect contact. Tree branches and other conductive objects are an ever-present threat to the industry. All arborists must trained be to recognize and avoid these electrical hazards. Qualified line-clearance arborists must have additional knowledge about electrical hazards and the special techniques used to work safely near electrical conductors.
COST: \$35.00		Stop the Bleed - Sam Bryan
9:00am - 11:00pm	2 CEUs available	Civilians need basic training in Bleeding Control principles so they are able to provide immediate, frontline aid until first responders are able to take over care of an injured person. Due to many situations, there may be a delay between the time of injury and the time a first responder is on the scene. Without civilian intervention in these circumstances, preventable deaths will occur.
COST: \$100.00		AT, Urban Forestry Domain: Tree Risk Management in the Urban Forest - Rob Sproule
8:00am - 3:00pm	6 CEUs available	Municipalities, Park Districts, Counties, and State agencies are charged with managing public spaces (e.g., highways, streets, sidewalks, preserves, and parks). The trees associated with these areas also fall under the management responsibilities of public agencies. This is due, in part, to the duty to provide a safe environment for users of their public spaces. With this duty comes heightened responsibility and liability. Public entities and arborists can increase their control regarding tree risk liabilities and accountability by implementing a reasonable tree risk management program. This course will discuss risk management concepts, the development of achievable and defensible tree risk management strategies and how to refine your operations to identify and mitigate risk in a municipal setting.
COST: \$100.00		AT, Urban Forestry Domain: Community Outreach - Steve Lane
8:00am - 3:00pm	6 CEUs available	Trees in a community are a collective asset, but all too often, the value of caring for those trees by professionals is not considered to be of great importance. This course will teach you how to provide outreach, education and resources to members of your community and local government leaders so they can better manage and care for their portion of the urban forest resulting in a healthier, less risk prone, diverse forest that is an improved asset for the collective community. Recommendations will be provided for commercial/industrial residents, homeowner's associations and individual property owners. The value of providing information about arboriculture will also be stressed, so that you as a tree manager can help grow and spread the word about the nature of Arboriculture as a profession.

IAA Annual Conference & Trade Show

At-A-Glance

Tuesday, November 5, 2019

General Session

8:00am - 8:30am	15 Minute IAA Update, Awards & Announcements of new Directors, 15 Minute Presentations from Vendors
8:30am - 9:15am	Z133 Update - John Ball.
9:15am - 10:00am	AR Symposium Update - John Ball.
10:00am - 10:30am	Break with Exhibitors
10:30am - 11:50am	A Look at the Science and Uses of PGR's for Tree Growth Regulation in Urban Landscapes. Understanding the What, Where and the Why of Tree Growth Regulation - Lee Fredricks
11:50am - 1:00pm	Lunch with Exhibitors

Municipal Sessions

1:00pm - 2:00pm	Tough Trees for our Evolving Climate - Guy Sternberg
2:00pm - 2:45pm	GIS Dashboard for Monitoring Public Trees - Tony Dati & Andrew Vitale
2:45pm - 3:15pm	Break with Exhibitors
3:15pm - 4:00pm	The Pruning of Oaks: Training the Young to Achieve Grandeur - Guy Sternberg

Commercial Sessions

1:00pm - 2:00pm	7 Deadly Sins of Worker's Comp - Eric Petersen
2:00pm - 2:45pm	Improving the Biology of Soils and the Resiliency of Trees with Biochar - Mark Mann
2:45pm - 3:15pm	Break with Exhibitors
3:15pm - 4:00pm	Training and Career Development in Tree Care - Cindy Schwab

IAA Annual Conference & Trade Show
At-A-Glance
Tuesday, November 5, 2019

Utility Sessions

1:00pm - 2:00pm	Recruiting Safely in Utility Arboriculture - Kyle Finke
2:00pm - 2:45pm	The Business Case for Integrated Vegetation Management - John Goodfellow
2:45pm - 3:15pm	Break with Exhibitors
3:15pm - 4:00pm	Engagement in Safety within the Workforce - Matt Millette
5:00pm - 6:30pm	TREE Fund Raffle Come have a few drinks, network with the exhibitors and stay for the raffle! Bring some extra cash as raffle tickets will be sold throughout the day on Tuesday. All proceeds will go to support the TREE Fund. The Tree Research and Education Endowment Fund (TREE Fund) is shaping the future of trees and the arboriculture profession. The TREE Fund provides research grants, scholarships and educational programs to advance knowledge in the field of arboriculture and urban forestry. With this knowledge, arborists and citizens will be better equipped to ensure that healthy, mature trees remain an integral part of the urban and suburban communities of our future.

Are you certified?

For more information on how to become certified...

Contact the IAA office 877-617-8887
Ask for April or Monica

Or

Visit our website: www.illinoisarborist.org

(continued on page 14)

IAA Annual Conference & Trade Show At-A-Glance Wednesday, November 6, 2019

General Session

8:00am - 9:00am	Precision Tree Felling: Tree Species Characteristics & Hinge Wood Mechanics - Jay Hayek
9:00am - 10:00am	Growing Healthy Trees in the Built Environment - Michelle Catania
10:00am - 10:30am	Break with Exhibitors
10:30am - 11:15am	Jake Meisbauer TBD
11:15am - 12:00pm	Toxic and Poisonous Plants - Chris Evans
12:00pm - 1:00pm	Lunch with Exhibitors

Municipal Sessions

1:00pm - 2:00pm	Customer Service - Steve Ludwig
2:00pm - 3:00pm	Log & Order - Joe Hansen

Commercial Sessions

1:00pm - 2:00pm	Lowering Insurance Cost Through Risk Management - Eric Petersen
2:00pm - 3:00pm	Employee Health: A Key to Success - Amanda Carpenter

Utility Sessions

1:00pm - 2:00pm	Introducing the new ISA BMP-Utility Tree Risk Assessment - John Goodfellow
2:00pm - 3:00pm	Technology and Safety - Jason Brown

IFA: Illinois Native Trees - Ecology and Utilization

1:00pm - 2:00pm	History of Forest Pest Outbreaks in North America - Ryan Pankau
2:00pm - 3:00pm	Frameworks and Systems in Place to Detect and Prevent Future Forest Outbreaks - Tricia Bethke

IAA Annual Conference & Trade Show

Tuesday Spanish Sessions - Eduardo Medina

8:40am - 10:15am	Arboriculture in Latin America. La Arboricultura en Latinoamerica
10:15am - 10:45am	Break with Exhibitors
10:45am - 11:50am	Rigging, Rings, Blocks and Pulleys. Cordaje, Aros, cuaderna les y Poleas
11:50am - 1:00pm	Lunch
1:00pm - 2:45pm	Climbing Safe and Efficient. Trepa segura y Eficiente
2:45pm - 3:15pm	Break with Exhibitors
3:15pm - 4:00pm	Blending the Cultures, "How to Work with Someone Who is from a Different Country" Mezcla de culturas "Como trabajar con alguien de diferente pais"

Tuesday, November 5, 2019 Joseph Kramer Arboriculture Demonstration Area

8:40am - 10:00am	Modern Arborist Rope Construction and Uses - Norm Hall, Beau Nagan, Cormac Nagan
10:00am - 10:30am	Break with Exhibitors
10:30am - 11:15am	Patient Packaging and How to Prepare the Patient for EMS - Nate Paulsberg, Elevated Safety, Dale Abbinanti, Norm Hall
11:15am - 11:50am	First Aid, Controlling Bleeding, and Blunt Force Trauma - Nate Paulsberg, Dale Abbinanti, Norm Hall
11:50am - 1:00pm	Lunch
1:00pm - 2:00pm	Work Positioning Strategies and Techniques - Norm Hall, Beau Nagan, Cormac Nagan
2:00pm - 2:45pm	Redirects for MRS/SRS - Norm Hall, Beau Nagan, Cormac Nagan
2:45pm - 3:15pm	Break with Exhibitors
3:15pm - 4:00pm	Pruning Around Energized Lines - Brian Sprinkle and Justin Ranney

Wednesday, November 6, 2019 Joseph Kramer Arboriculture Demonstration Area

8:00am - 10:00am	SRT/SRS Climbing Devices and Practical Applications - Norm Hall, Beau Nagan, Cormac Nagan
10:00am - 10:30am	Break with Exhibitors
10:30am - 12:00pm	SRT/SRS Practical Working Canopy and Basal Anchors - Norm Hall, Beau Nagan, Cormac Nagan
12:00pm - 1:00pm	Lunch
1:00pm - 3:00pm	Rigging Down the Tree - Norm Hall, Beau Nagan, Cormac Nagan

A BIG THANK YOU TO ALL THE 2019 CONFERENCE SPONSORS!

THANK YOU SHOW SPONSORS!



THANK YOU JOSEPH KRAMER ARBORICULTURE DEMONSTRATION AREA SPONSORS!



THANK YOU LUNCH SPONSOR!



THANK YOU COOKIE BREAK SPONSORS!



THANK YOU TREE FUND RECEPTION SPONSOR!



THANK YOU NOTEBOOK SPONSORS!



TREE Fund Awards



MEDIA CONTACT:
Teresa Recchia
Communications Coordinator
trecchia@treefund.org
www.treefund.org
630-369-8300 x-203

FOR IMMEDIATE RELEASE

TREE Fund awards nearly a quarter million dollars for tree research and education projects

Naperville, IL, June 18, 2019 – TREE Fund has awarded \$234,000 for urban tree research and education in its spring 2019 grant-making season. With these new awards, the 501(c)3 charity has provided over \$4.2 million in grants and scholarships since its inception in 2002.

“TREE Fund hit a significant milestone in our history this spring as we passed the \$4.0 million mark in total grants awarded since we were established in 2002,” says TREE Fund President and CEO J. Eric Smith. “While this is a sizable achievement in its own right, we know from recently published research that over \$2.60 in additional funds have been leveraged over the past 17 years for each grant dollar awarded by TREE Fund, so the reach of our work is truly robust and influential throughout our industry. This success for our relatively small nonprofit corporation has only come through the strength of countless partnerships: with businesses, volunteers, donors, colleges and universities, and our parent organizations, the International Society of Arboriculture and the Tree Care Industry Association. We will continue to expand our portfolio this autumn when we award the first Bob Skiera Memorial Fund Building Bridges Initiative and Barborinas Family Fund Grants, having completed their endowments last year. We are deeply grateful to everyone who has contributed to us reaching this year’s milestone and are very proud to continue our work on behalf of our urban and community forests and the skilled professionals who care for them.”

2019 TREE Fund Research Grant Recipients

Hyland R. Johns Research Grant



Dr. Robert Fahey’s (University of Connecticut) “Monitoring and modeling changes in street tree communities over time,” will characterize how the street trees of Philadelphia have changed over a five-year period and allow for the prediction of future changes. This study has direct application to municipal forestry, supporting practitioners as they manage street tree communities with an intent to

shape their urban forests. Dr. Fahey’s project will produce a freely available toolkit that will enable municipal foresters in other cities to “grow” their urban forests with local inventory data.

#more#

(continued on page 19)

TREE Fund Awards (cont) (continued from page 9)

Utility Arborist Research Fund Grant



Phil Chen's (CN Utility Consulting), "Cost of deferred maintenance," will show what happens when utilities fall behind on costly powerline clearing cycles. Tree-powerline conflicts are very common, affect public safety and can lead to devastating consequences as was recently witnessed in California's wildfires. Mr. Chen's study will supply utilities with data on how the time and cost to provide clearance from powerlines escalates as trees grow beyond conductors.

Sponsored Grant



Carolyn G. Mahan, PhD's (Penn State Altoona) "Long term effects of electrical right-of-way vegetation management on floral and faunal communities" seeks to evaluate floral and faunal response to right-of-way (ROW) management at three sites in Pennsylvania, including the historic "Bramble and Byrnes" test sites on State Game Lands 33 in Pennsylvania. This year's award continues this long-standing project, and the work will be conducted in cooperation with the Center for Pollinator Research and the Frost Entomological Museum at Penn State University. With this sponsored grant, Dr. Mahan will continue conducting breeding bird productivity research, vegetation surveys, and sweep net surveys for native bees on ROW sites.

Note: This project is sponsored by: Asplundh Tree Expert, LLC, Corteva Agriscience (Agricultural Division of DowDuPont), PECO Energy Company (an Exelon Company) and First Energy Corp.

2019 TREE Fund Education Grant Recipients

Frank E. Gamma, Sr. Arboriculture Education Fund



Tree Care Industry Association Foundation's (Londonderry, NH) – "Arborist Safety Training Institute" will provide funding to bring high quality, local, and affordable safety training to working arborists via grants for job and safety training to minimize injury and promote overall workforce safety.

Ohio Chapter ISA Education Grant



Holden Forests & Gardens' (Kirtland, OH) – "Cleveland Neighborhood Tree Walks" will engage underserved communities in the growth, care, and enjoyment of Cleveland's most beautiful and beneficial asset: Trees. Cleveland's canopy cover is estimated at only 19%, one quarter of what is possible, and each year an estimated 97 acres of tree canopy is lost. Cleveland Neighborhood Tree Walks will engage residents with the opportunity to meet and build relationships with each other and their neighborhood through shared interest in the urban canopy. Tree ID keys, descriptive maps for self-led walks, and interactive displays inside libraries will complement Tree Walks and be available to residents. This project will provide an eye-opening opportunity for residents to experience community trees and their role in creating healthy, vibrant communities.

2019 TREE Fund Scholarship Recipients

\$5,000 Bonnie Appleton Memorial Scholarship – Alexandra Love, Michigan State University

#more#

(continued on page 20)

TREE Fund Awards (cont)

\$5,000 Robert Felix Memorial Scholarship

- Maraea Harris, Northern Virginia Community College
- Kasandra Hernandez, Cuyahoga Community College
- Harrison Sopp, Paul Smith's College

\$5,000 John Wright Memorial Scholarship – Robert Hammond, University of Cincinnati

\$3,000 Horace M. Thayer Scholarship – Steven Constable, Penn State

About TREE Fund

Tree Research and Education Endowment (TREE) Fund is a 501(c)3 charity dedicated to the discovery and international dissemination of new knowledge in urban forestry and arboriculture (the science of caring for trees in a landscape). TREE Fund awards scholarships and education grants to engage and support the next generation of tree stewards, and multiple research grants to improve the science, safety and practice of arboriculture.

With support from individual donors and Partners, TREE Fund research has contributed to:

- Improving conditions for tree growth in difficult sites
- Developing strategies to manage diseases and pests that affect urban trees
- Improving utility line clearing practices
- Understanding air pollution reduction and carbon sequestration by trees
- Determining the costs and benefits of urban trees

For more information, visit treefund.org.

###

Mark Your Calendars!

2019
IAA Annual Golf Outing
August 23rd

St. Andrews Golf Club
West Chicago, Illinois

2019
Illinois Tree Climbing Competition
September 28th

Shiloh Park
Zion, Illinois

Wedgle® Direct-Inject™ **TREE INJECTION SYSTEM**

Our advanced technology
for tree treatment
allows you to

***INCREASE THE
NUMBER OF
TREES YOU
TREAT IN
A DAY!***



- ◆ No drilling damage
- ◆ No mixing at job sites
- ◆ No guarding or return trips
- ◆ No waiting for uptake
- ◆ Treats most trees in five minutes or less!
- ◆ Successful and most profitable add-on service

Multiple injection tips designed for all types of trees, conifers and palms

Insecticides • Fungicides • PGRs • Antibiotics • MicroNutrients



888-557-2455
BannerSales360@gmail.com
www.bannersales.net



The Most Important Aspect of Hiring

by Eric Petersen (ArboRisk Insurance)

As a businessowner, I've felt the hiring pressure that you feel. Your company is growing and you need more people to continue the momentum, however, you don't know how to find that person.

In my opinion, the most important aspect to hiring is being prepared before you need to hire someone.

Many tree service owners struggle with bad hires because they are not prepared before they need a new person. Hiring someone just because you need more help usually causes more problems than it solves. You're probably nodding your head in agreement right now, because we all have been there; the good news is that there's hope to better hiring. This article outlines a few ideas for you to have in place to be better prepared before you hire your next employee.

Job Descriptions - Do you have written job descriptions for each position? If not, now is the time to create them. Having a written job description will help you understand the specific needs for your organization and thereby give you direction for hiring and recruiting of new employees.

Career Path - Create an easy to follow diagram to show employees how they can progress through your company. Creating levels or tier to certain positions (like Climber I and Climber II) can help a prospective employee see that there is a structured growth potential within your organization. To learn more about career paths, read this article: [Are You in Danger of Losing Your Best Employee?](#)

Hiring Strategy – Having a standard hiring process is a crucial part of a successful business. Create a list of all of the paperwork necessary for someone to apply for the job. Then formulate an interview process that will allow you to best qualify the potential

employee. This can be a series of phone and in-person meetings. I suggest involving some of the potential employee's team members as well to make sure their personalities fit well together.

Who Do You Want – Do you know what characteristics you want in an employee? What traits fit with your company's culture and will help build everyone up around them. Are there physical requirements that you need the individual to possess?

Where Should You Be Recruiting – While finding new employees is difficult, having everything else in place before you go looking for them will help tremendously. It will also point you to the places (both in person and online) that your ideal employee is at. For a few of my favorite recruiting tips, check out my article: [5 Hiring Hotspots](#), which is in the Spring Issue of *Illinois Trees*.

Being prepared to hire the best will be your surest way to actually hiring the best. Take some time to develop your hiring procedure, I promise you won't regret it.

If you would like help creating a hiring and recruiting structure, contact ArboRisk to learn how to sign up for our Thrive services.



Don't forget to vote!

2019 Board of Directors

You will have the opportunity to elect three (3) officers, five (5) directors and one (1) CoR Liaison.

These Directors will be your voice in the organization.

An e-mail ballot will be sent to all members of both IAA and ISA. The election will run from **12:01am CST, 7 August 2019** through **11:59pm CST, 7 October 2019**.

Drug Free Workplace - Is it Possible? (cont)

average cost to account for the lost productivity, new training, and risk of higher claims adds up to about \$35,000 per year in expenses to the employer. Minimizing these expenses will have a direct impact on increasing your bottom line.

Employers have many resources that will assist in building a drug free workplace for example: Society for Human Resource Management (SHRM) offers a free document on their website that will serve as a good starting point. To view the site (click here: https://www.shrm.org/resourcesandtools/tools-and-samples/policies/pages/cms_019908.aspx).

Personalize your program to your business's location and operations, and have each

employee sign off stating they have read and understand the policy.

If you are unsure of what guidelines your business may be subject to, contact our office as helping implement drug and alcohol policies is part of our Thrive program. Building and believing in this policy will help increase your bottom line and most importantly ensure that you are doing everything you can to make sure each employee gets home safe at night.



WE SEE MORE FROM UP HERE.

We've sat in that harness.
We know the risks.
Trust us to help minimize them.

Solutions for arborists by arborists.
arboriskinsurance.com (262) 432-7173

ArboRisk
Insurance

THRIVE
Business Services

planting process
best-practices

URBAN TREE
CARE ISSUE
INSIGHTS

technology
transfer
wisdom

URBAN FORESTRY EXPERTISE
ARBORICULTURE
EDUCATION

URBAN FORESTRY EXPERTISE
**research
acumen**

science-based data

URBAN TREE
CARE ISSUE
INSIGHTS

ROOT AND SOIL
MANAGEMENT TOOLS

technology transfer wisdom

SCIENTIFIC
DISCOVERY
INTELLIGENCE
technology
transfer
wisdom

PLANT
HEALTH
CARE
STRATEGIES
PROPAGATION,
PLANTING AND
ESTABLISHMENT
KNOW-HOW
ROOTS
AND
SOIL

DISSEMINATION
OF NEW
KNOWLEDGE
PLANT
HEALTH
CARE
STRATEGIES
ROOTS
AND SOIL
URBAN FORESTRY
EXPERTISE

What does **ONE FREE CEU** credit really get you?

Knowledge gained from TREE Fund webinars directly impacts tree care practices, arborists' techniques and people's lives every day. Get research-driven insight direct from industry-renowned scientists while gaining CEU credit from ISA, SAF, or NALP.

FOR A LIST OF WEBINAR SPEAKERS AND DATES, VISIT:

treefund.org/webinars

THANK YOU TO OUR CROWN AND DIAMOND PARTNERS:

Visit treefund.org/partners to see all of our Partners

ASPLUNDH

DAVEY
Proven Solutions for a Growing World

BARTLETT
TREE EXPERTS



Green
Manufacturing, Inc.

ISA

LEWIS
TREE SERVICE
Job Done Right

CORTEVA
agriscience



TREE FUND
Cultivating Innovation



asca 2019 Annual Conference

December 8–11

Intercontinental New Orleans | New Orleans, LA

Hear from subject-matter experts on ways to approach problems differently, learn how to develop stronger work products

for your clients, and gain the knowledge needed to expand your practice into areas not previously considered.

Co-sponsored by:
Illinois Arborist Association
Indiana Arborist Association
ISA Utah Chapter
New York State Arborists
Ohio Chapter ISA
Western Chapter ISA

Supported by:
Tree Care Industry Association

asca-consultants.org/AC2019

asca AMERICAN SOCIETY of
CONSULTING ARBORISTS



Illinois Arborist Association

CHAPTER OF INTERNATIONAL SOCIETY OF ARBORICULTURE

P.O. Box 860
Antioch, Illinois 60002
Tollfree Phone: 877-617-8887
Fax: 262-857-6677



Application for 2020 IAA Day of Service

Applications are due one week before the IAA annual conference – October 25, 2019. Please email application to april@illinoisarborist.org

Name of Applicant: _____

Contact: _____

Mailing address: _____

Phone: _____

Project Site Address: _____

Description of work requested: _____

How will this project help your organization: _____

Project timeline and date to be completed: _____

What will be provided? (equipment, lunch, refreshments, ect.): _____

Number of volunteers needed: _____ Additional comments/specifications: _____

Illinois Trees



Inside this Issue

Sudden Oak Death
Illinois Tree Climbing Competition
Drug Free Workplace - Is it Possible?
IAA Annual Conference & Trade Show Program
TREE Fund Awards
The Most Important Aspect of Hiring